

Annual Statistics of Foreign Employment 2019

*This is the twenty fourth series of annual statistical report published by the Sri Lanka
Bureau of Foreign Employment*
that provides a continuous review of the trend and development of the
foreign employment industry in Sri Lanka.



Research Division,
Sri Lanka Bureau of Foreign Employment,
234, Denzil Kobbekaduwa Mw;
Koswatta,
Battaramulla,
Sri Lanka.

Tel : (+94)112864116,
E-mail : mgr_res @slbfe.lk
Web : www.slbfe.lk

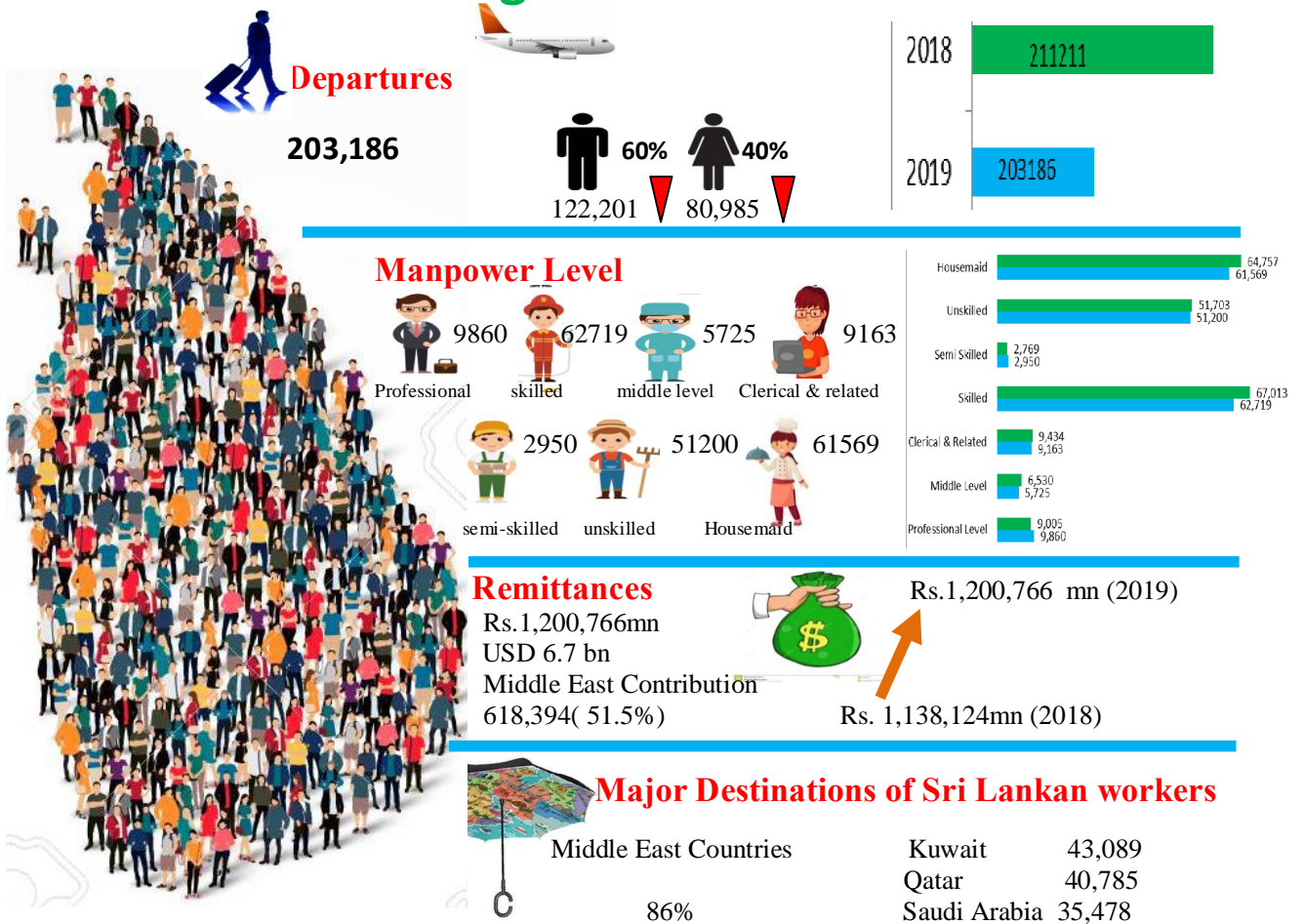
List of Tables

	Page No
Table 1.1. Departures for Foreign Employment by Gender 2014-2019*	03
Table 1.2 Departures for Foreign Employment through Private Sources & Agency Sources by Gender 2014-2019*	03
Table 1.3 Departures of Sri Lankans for all purposes 2016-2019*	04
Table 1.4 Arrivals of Sri Lankan (Unclassified) 2016-2019*	04
Table 1.5 Total Departures for Foreign Employment by Manpower Level 2014-2019*	05
Table 1.6 Male Departures for Foreign Employment by Manpower Level 2014 – 2019*	05
Table 1.7 Female Departures for Foreign Employment by Manpower Level 2014 – 2019*	05
Table 1.8 Total Departures for Foreign Employment by Country and Manpower Level-2019*	06
Table 1.9 Total Departures for Foreign Employment by Country and Manpower Level-2018	07
Table 1.10 Total Departures for Foreign Employment through All Sources by Country 2015-2019*	08
Table 1.11 Departures for Foreign Employment through Private Sources & LFEAs by Country 2018-2019*	09
Table 1.12 Departures of Males for Professional Jobs by Country 2015-2019*	10
Table 1.13 Departures of Females for Professional Jobs by Country 2015-2019*	11
Table 1.14 Departures of Males for Skilled Jobs by Country 2015-2019*	12
Table 1.15 Departures of Females for Skilled Jobs by Country 2015-2019*	13
Table 1.16 Departures of Males for Semi-Skilled Jobs by Country 2015-2019*	14
Table 1.17 Departures of Females for Semi-Skilled Jobs by Country 2015-2019*	15
Table 1.18 Departures of Males for Middle Level Jobs by Country 2015-2019*	16
Table 1.19 Departures of Females for Middle Level Jobs by Country 2015-2019*	17
Table 1.20 Departures of Males for Clerical and Related Jobs by Country 2015-2019*	18
Table 1.21 Departures of Females for Clerical and Related Jobs by Country 2015-2019*	19
Table 1.22 Departures of Males for Unskilled Jobs by Country 2015-2019*	20
Table 1.23 Departures of Females for Unskilled Jobs by Country 2015-2019*	21
Table 1.24 Departures of Females as Domestic Housekeeping Assistants in Country wise 2015-2019*	22
Table 1.25 Departures for Foreign Employment by District and Countries-2019*	23
Table 1.26 Total Departures for Foreign Employment by Districts-2015-2019*	28
Table 1.27 Departures for Foreign Employment by Districts and Gender 2015-2019*	29
Table 1.28 Departures for foreign Employment by district, Manpower level and Gender-2019*	30
Table 1.29 Departures for Foreign Employment by District, Manpower Level and Gender-2018	31
Table 1.30 Departures for Foreign Employment by Manpower Level & Gender 2019*-Anuradhapura district	32
Table 1.31 Departures for Foreign Employment by Manpower Level & Gender 2019*-Amapara district	33
Table 1.32 Departures for Foreign Employment by Manpower Level & Gender 2019*-Badulla district	33

	Page No
Table 1.33 Departures for Foreign Employment by Manpower Level & Gender 2019*-Batticaloa district	34
Table 1.34 Departures for Foreign Employment by Manpower Level & Gender 2019*-Colombo district	34
Table 1.35 Departures for Foreign Employment by Manpower Level & Gender 2019*-Galle district	35
Table 1.36 Departures for Foreign Employment by Manpower Level & Gender 2019*-Gampaha district	36
Table 1.37 Departures for Foreign Employment by Manpower Level & Gender 2019*-Hambantota district	36
Table 1.38 Departures for Foreign Employment by Manpower Level & Gender 2019*-Jaffna district	37
Table 1.39 Departures for Foreign Employment by Manpower Level & Gender 2019*-Kilinochchi district	37
Table 1.40 Departures for Foreign Employment by Manpower Level & Gender 2019*-Kalutara district	38
Table 1.41 Departures for Foreign Employment by Manpower Level & Gender 2019*-Kegalle district	39
Table 1.42 Departures for Foreign Employment by Manpower Level & Gender 2019*-Kandy district	40
Table 1.43 Departures for Foreign Employment by Manpower Level & Gender 2019*-Kurunegala district	41
Table 1.44 Departures for Foreign Employment by Manpower Level & Gender 2019*-Matara district	42
Table 1.45 Departures for Foreign Employment by Manpower Level & Gender 2019*-Matale district	43
Table 1.46 Departures for Foreign Employment by Manpower Level & Gender 2019*-Mannar district	43
Table 1.47 Departures for Foreign Employment by Manpower Level & Gender 2019*-Monaragala district	44
Table 1.48 Departures for Foreign Employment by Manpower Level & Gender 2019*-Mullativu district	44
Table 1.49 Departures for Foreign Employment by Manpower Level & Gender 2019*-Nuwara Eliya district	45
Table 1.50 Departures for Foreign Employment by Manpower Level & Gender 2019*-Polonnaruwa district	45
Table 1.51 Departures for Foreign Employment by Manpower Level & Gender 2019*-Puttalam district	46
Table 1.52 Departures for Foreign Employment by Manpower Level & Gender 2019*-Rathnapura district	47
Table 1.53 Departures for Foreign Employment by Manpower Level & Gender 2019*-Vauniya district	47
Table 1.54 Departures for Foreign Employment by Manpower Level & Gender 2019*-Trincomalee district	48
Table 1.55 Departures for Foreign Employment through All Sources by Age Group and Gender 2016-2019*	49
Table 1.56 Departures for Foreign Employment by Age Group and Gender 2016-2019*	50
Table 2.1 Private Remittances (Rs.Million) 2010-2019*	52
Table 2.2 Private Remittances (Rs.million) in monthly 2018-2019	52
Table 2.3. Private Remittances and Foreign Earnings (Rs. Million) during the year 2010-2019*	53
Table 3.1 Participations for Training Programmes in year 2019*	54
Table 4.1 No of Complaints Received in 2019 by year of Departure of migrant employees	55
Table 4.2 Migrants' Complaints Received by Gender wise 2015-2019*	55
Table 4.3 Nature of received complaints during 2015-2019*	56
Table 4.4 Complaints Received by Country 2015-2019*	57
Table 4.5 Nature of Complaints Received in Manpower Level 2015-2019*	58
Table 4.6 Reported Deaths of Migrants Workers 2015-2019*	58

	Page No
Table 4.7 Number of Complaints Received, Resolved and Compensation Payments during 2015-2019*	58
Table 4.8 Reported Deaths of Migrant Workers in Country Wise 2015-2019*	59
Table 5.1 Number of Licensed Agencies 2015-2019*	61
Table 5.2 Dispersion of Prevailing Licensed Recruitment Agencies by District in Year 2018 & 2019*	62
Table 6.1 Recruitment Agencies who sent more than 100 workers in 2019*	62
Table 7.1 Total number of job received and number of recruitments during 2015-2019*	66
Table 7.2 Received job orders and departures for foreign employment during 2019*	67
Table 8.1 Payment of Compensation under Insurance Coverage 2015-2019*	86
Table 8.2 Scholarships Granted for Children of Migrant Workers in Year 2018-2019*	86
Table 8.3 School Equipment Awarded For Children of Migrant Workers 2015-2019*	86
Table 8.4 Repatriation of distressed workers during 2015-2019*	87
SPECIAL STATISTICAL APPENDIX	
Table 01. Departures for Foreign Employment by Gender 1986-2019*	88
Table 02 Departures for Foreign Employment through Private Sources & Agency Sources by Gender 1997-2019*	89
Table 03 Departures for Foreign Employment through Registered Sources by Country 2015-2019*	90
Table 04 Female Departures for Foreign Employment by Manpower Level 2014 – 2019*	91

Outward Labour Migration in Sri Lanka-2019



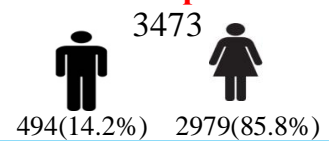
Major Destinations by Manpower Level



Migration Channels



Complaints



	Training Courses	Participants for training courses	Deaths	Raids on illegal recruitment	Licensed Agencies	Educational scholarship beneficiaries	Highest Migration	Colombo district
No	12	34,309	242	550	894	3489	Lowest Migration	24453
								Mullaitivu district
								151

KEY OUTWARD LABOUR MIGRATION FIGURES 2018/19

Departures for Foreign Employment by Gender						Departures for Foreign Employment through Migration Channels				
Year	Male		Female		Total	Year	Self Basis		Through Agencies	
	No.	%	No.	%			Male	Female	Male	Female
2019*	122,201	60.14	80,985	39.86	203,186	2019*	100,427	33,380	21,774	47,605
2018	129,712	61.41	81,499	38.58	211,211	2018	109,502	35,006	20,210	46,493

Total Departures for Foreign Employment by Manpower Level								Departures for Foreign Employment by Districts				
Year	Professional Level	Middle Level	& Related	Skilled	Semi Skilled	Unskilled	Housemaid	Year	Colombo	Gampaha	Kandy	Kurunegala
	No.	No.	No.	No.	No.	No.	No.					
2019*	9,860	5,725	9,163	62,719	2,950	51,200	61,569	2019*	24,453	22,395	19,205	18,672
2018	9,005	6,530	9,434	67,013	2,769	51,703	64,757	2018	25,469	21,898	19,667	19,935

Migrant workers' Complaints (by Gender)				Reported Deaths of Migrant Workers				Scholarship Granted for Children of Migrant Workers		
Year	Male	Female	Total	Year	Male	Female	Total	Year	No. of Scholarships Granted	Cost (RS.)
2019*	494	2979	3473	2019*	166	76	242	2019*	3,489	87,265,000.00
2018	596	2944	3540	2018	179	60	239	2018	3,288	82,300,000.00

Departures for Foreign Employment through All sources by Age group And Gender																
Age Groups	<=19		20 - 24		25 - 29		30 - 34		35 - 39		40 - 44		45 - 49		≥50	
	Male	Female	Male	Female	Male	Female	Male	Female	Male	Female	Male	Female	Male	Female	Male	Female
2019*	198	39	14,642	2818	24,737	6,807	22,369	9,007	21,116	13,822	16,109	15,849	10,844	14,925	12,186	17,718
2018	1,622	150	17,002	2485	26,252	7,007	23,277	9,819	22,104	14,609	15,929	15,470	11,363	15,143	12,163	16,855

Private Remittances and Foreign Earnings (Rs.Mn)						
Year	Private Remittance	Tea	Rubber	Coconut	Garment	Total Exports
2019*	1,200,766	240,637	4,321	58,852	930,805	2,134,796
2018	1,138,124	210,668	4,747	46,166	725,017	1,747,423

Total Departures for Foreign Employment by Country and Manpower Level in 2019*								
Country	Professional	Skilled	Semi skilled	Middle level	Clerical	Unskilled	Housemaid	Total
Kuwait	176	9,972	192	227	574	3,414	28,534	43,089
Qatar	2,059	18,856	599	1,557	2,825	11,995	2,894	40,785
Saudi Arabia	725	10,846	371	543	763	9,328	12,902	35,478
U A E	2,410	9,374	1,357	1,719	3,466	8,260	6,280	32,866

